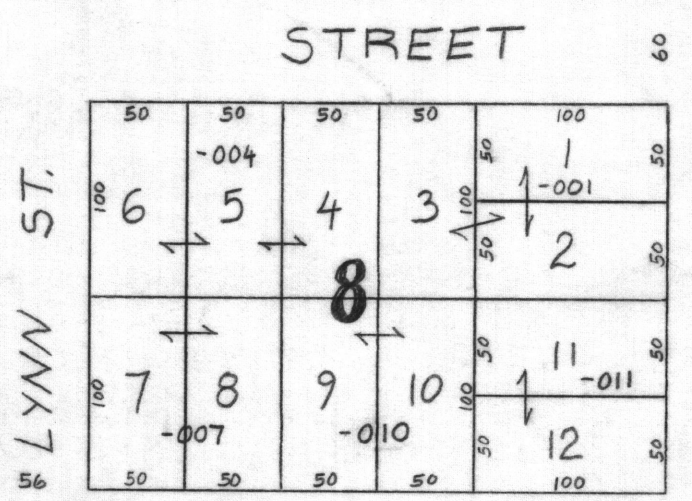
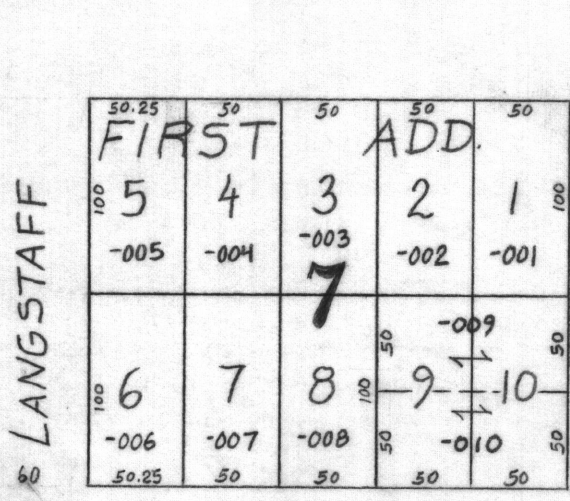
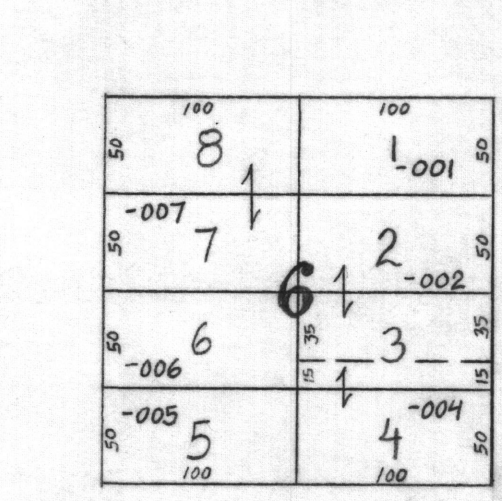
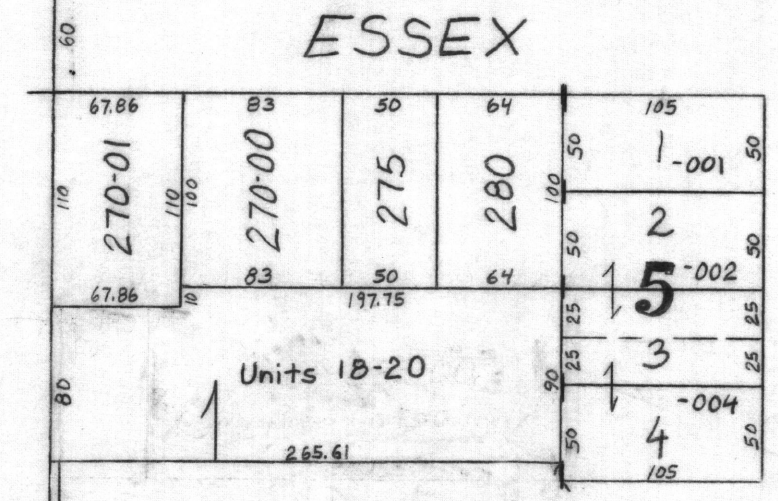
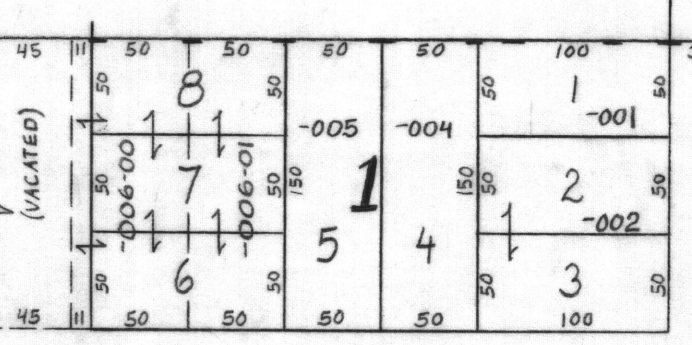
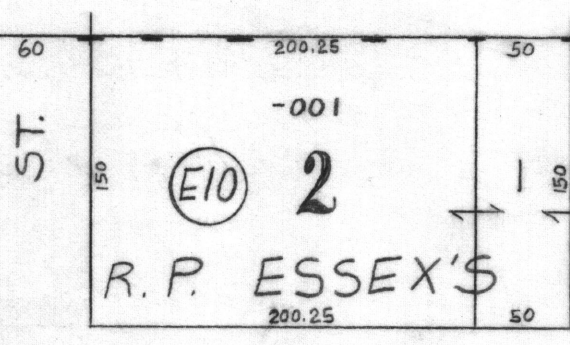
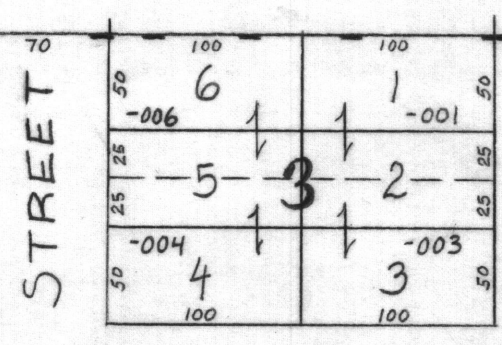
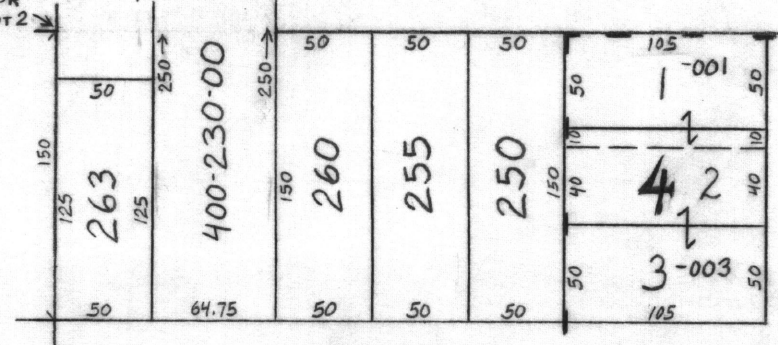


SE Cor Govt Lot 2  
See Map of NE 1/4 of SE 1/4



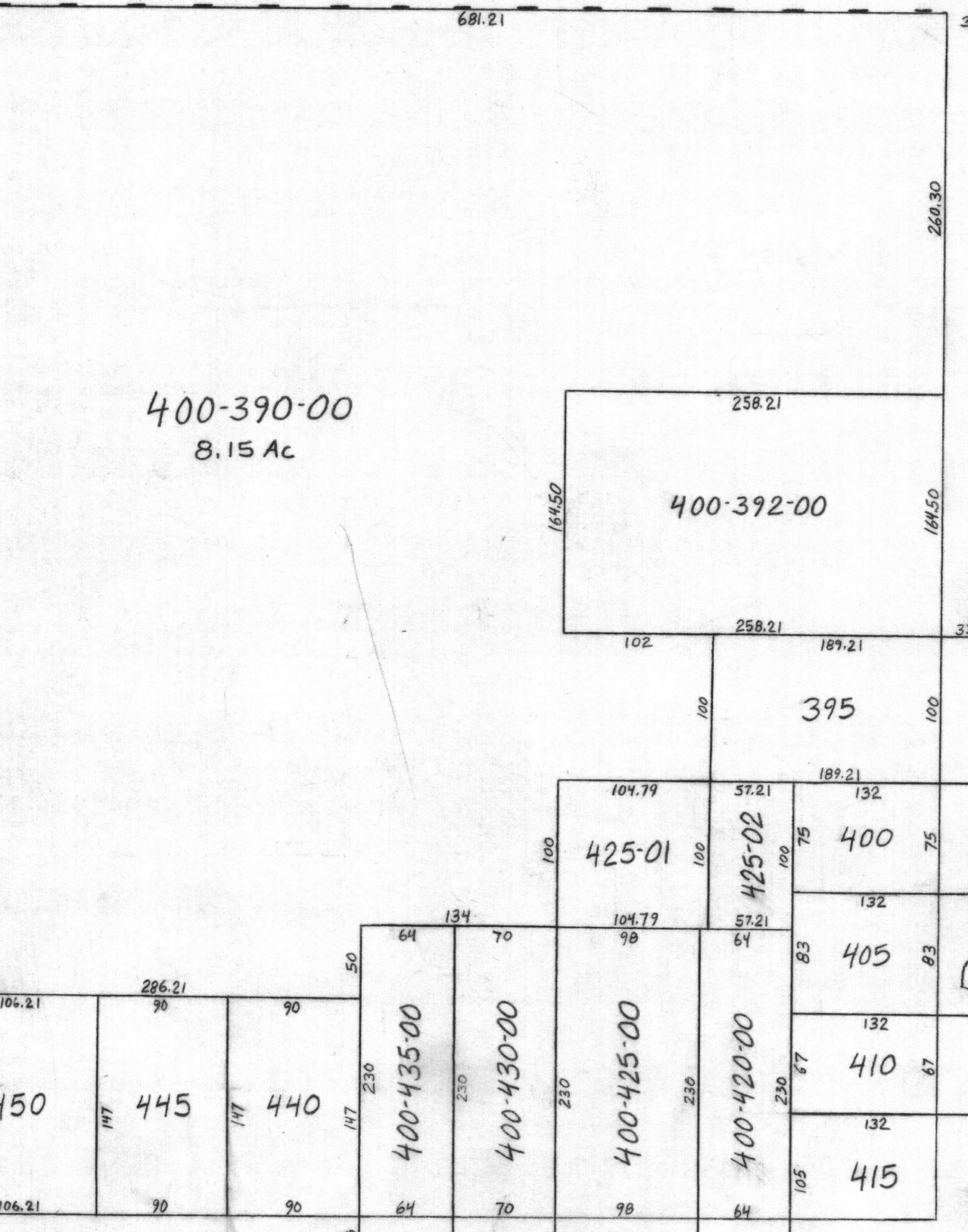
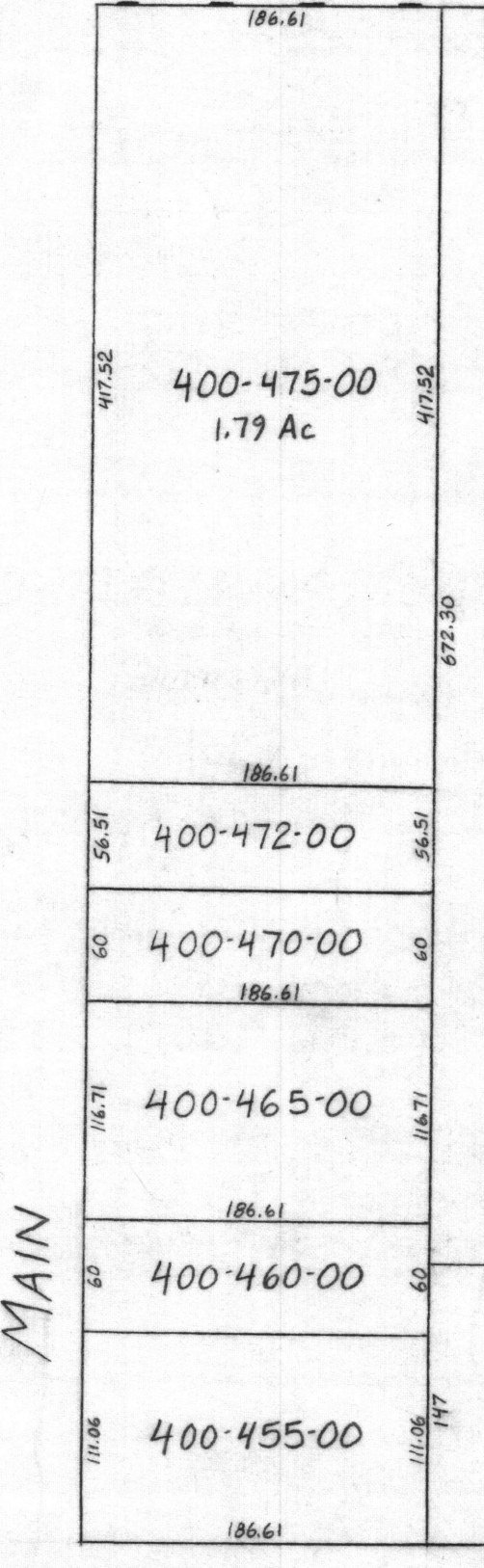
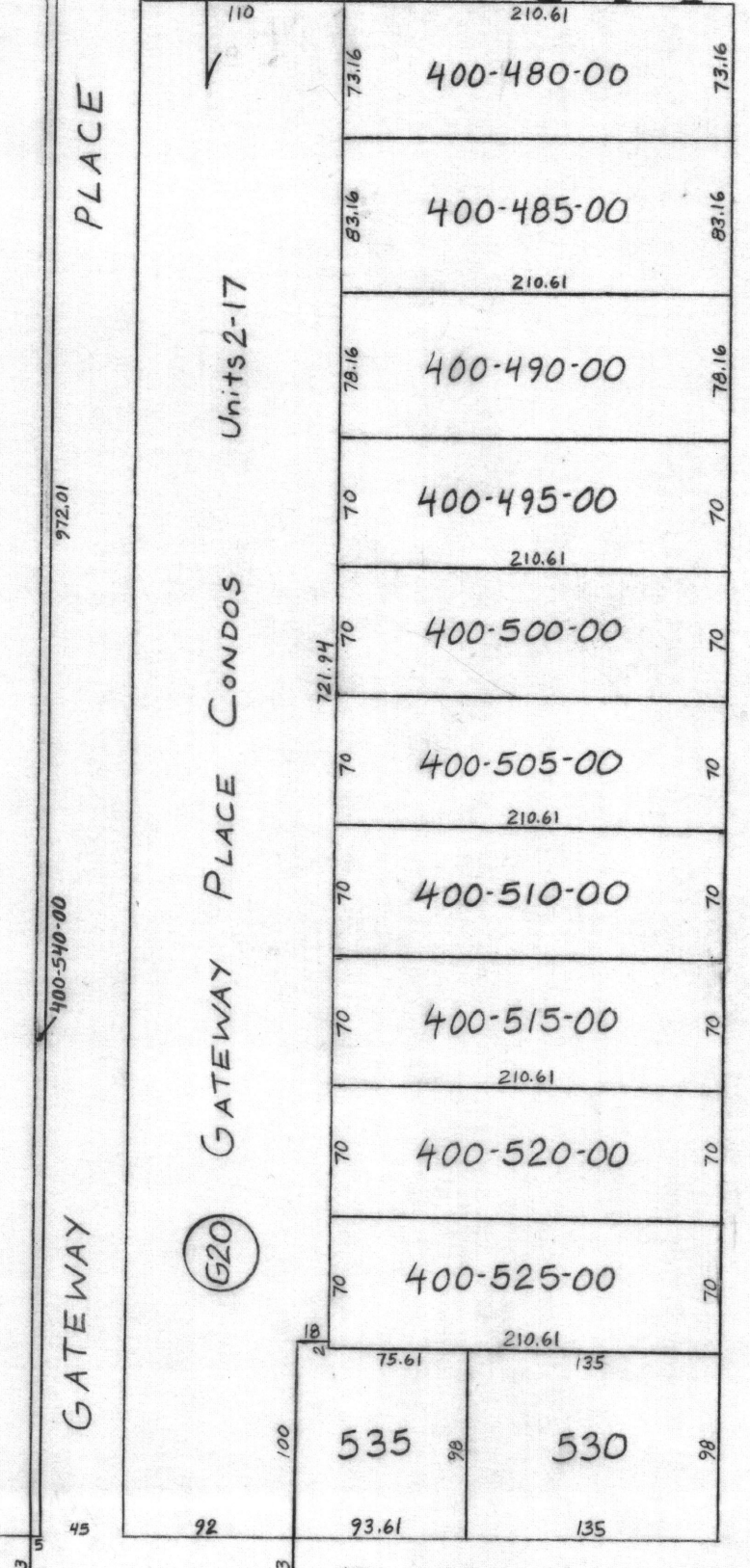
ESSEX STREET

ST. LANGSTAFF

LYNN ST.

STREET

STREET



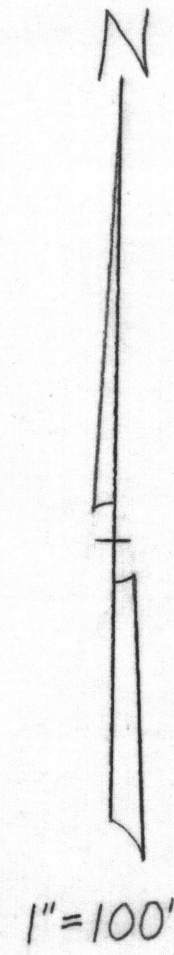
BORTON AVENUE

MAIN

450, 445, 440

400-435-00, 400-430-00, 400-425-00, 400-420-00

PINE



SE 1/4 OF SE 1/4 SECTION 14 T14N R5E